

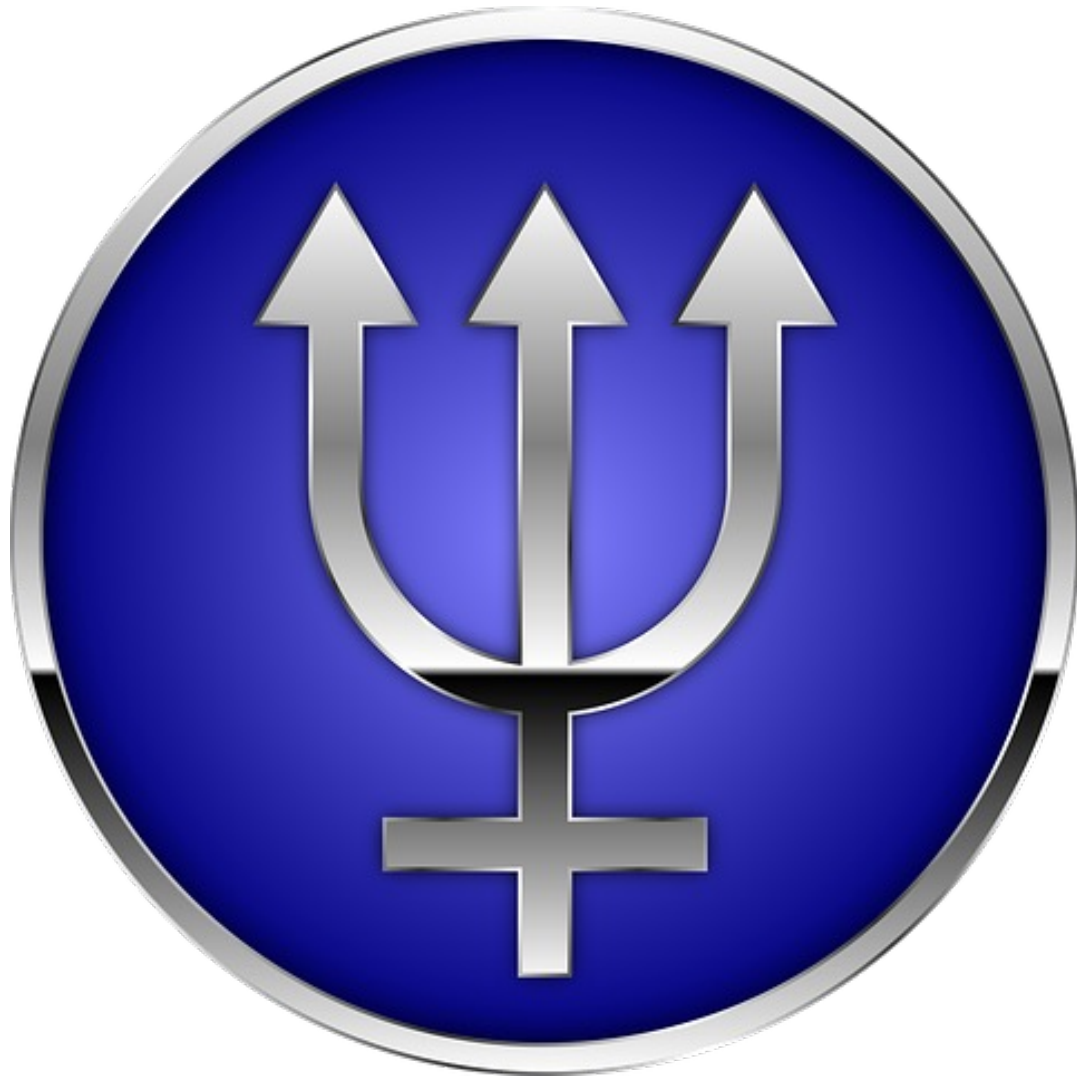


Tree of Life

Month 10

Consolidation

Self Expression and Creativity



Neptune Energy

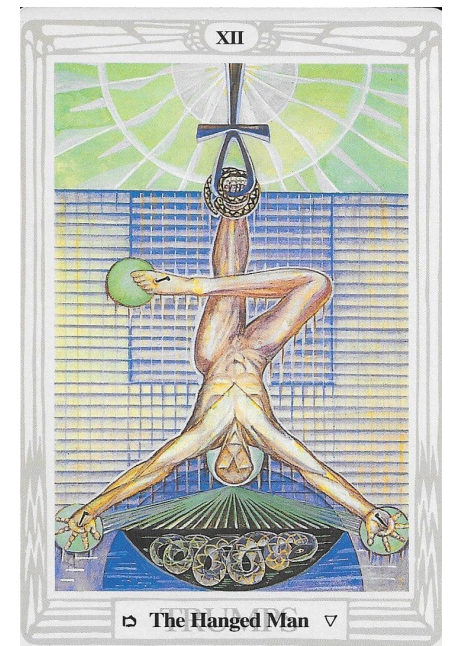
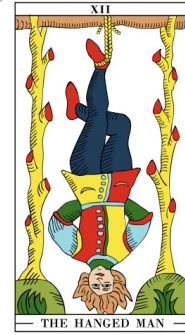
Neptune is a nebulous planet, his ethereal nature is affecting your dreams but consider what you could do if you harness the power and control what you dream of?

There are many ways to do this, but perhaps the easiest is to be mindful of your night time routines, what you put in under Neptune's reign will come out!

Read the books you're passionate about, maybe reduce screen time be that telly or the socials and meditating before bed is tricky! If you do meditate be sure to concentrate on things, you're happy to have pop up in your dreams.

The Hanged Man

- The card that represents Neptune isn't what you'd call a cheery one, but it's also not one anyone should fear.
- At its simplest it means look at life from another perspective, you would if you were hanging upside down, right? The primary force of this card and its association with Neptune is one of going with that flow.
- His head is often in water or by water, this is a card of release, release found by having some thinking time, trusting your intuition, instincts maybe, and then raising yourself up by finding the strength to use the restriction, the rope around your leg, to set yourself free by pulling yourself up.



II



The Priestess

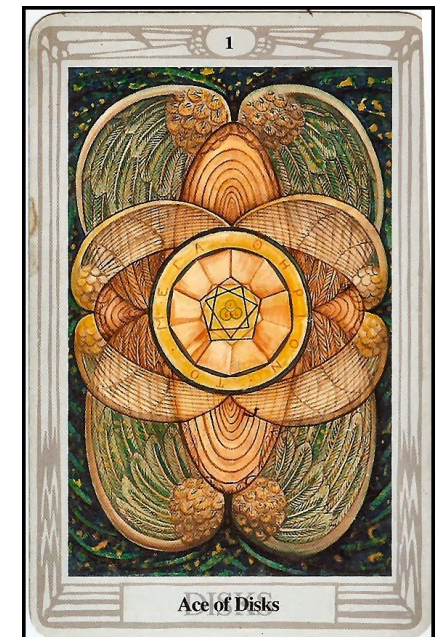
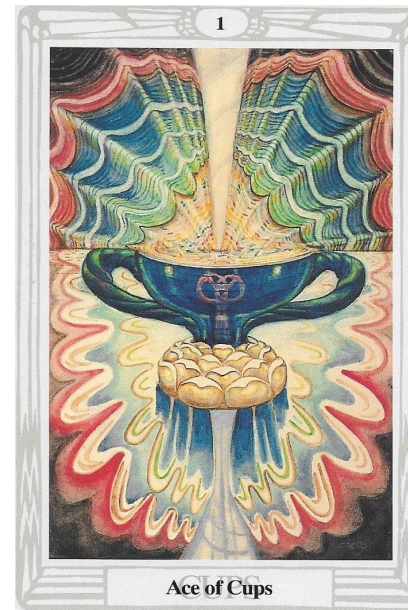
The High Priestess is the Gateway Card

- The Magician calls on his inner power, pushes it out, the High Priestess calls on external forces and calls them in.
- She's about intuition, knowing that despite what she sees in front of her it may not be the truth. She is also adept at hiding herself too.
- Silence is in play, this time it offers you the space to feel your way through, not to be corrupted by the noise and clutter.
- You will be asked to wear a blindfold in this temple to walk from Odetta's realms to Ioniel's using only your intuition.

The Four Aces Reminder

The four aces really don't need much of an introduction. They are the first rush of energy of their suits, Fire, Earth, Air and Water, reminding you that in Ioniel's realms the elements are far from forgotten, they are in fact exalted.

- *Ace of Wands:* The beginning of a new life – a new creative project or literally a new life, a baby.
- *Ace of Cups:* The beginning of a new relationship, the granting of a wish or perhaps the inspiration to begin something new.
- *Ace of Swords:* Clarity. Obstacles are removed and you can see your way through.
- *Ace of Disks:* A new job, the start of a new project or perhaps becoming more involved with Earth conservation.



Temple Set up

- This temple is one sided, not the best place to have an argument, disagreement or debate; right?
- What's the point? That is the point. This temple is a dot, a place in the universe where it all began, what 'all' is depends on the seeker, or should that be the observer?
- All creation comes from this one point, every choice you make, every expression of yourself you want to make manifest comes from here.
- Said it before, but worth repeating; You Are The Point

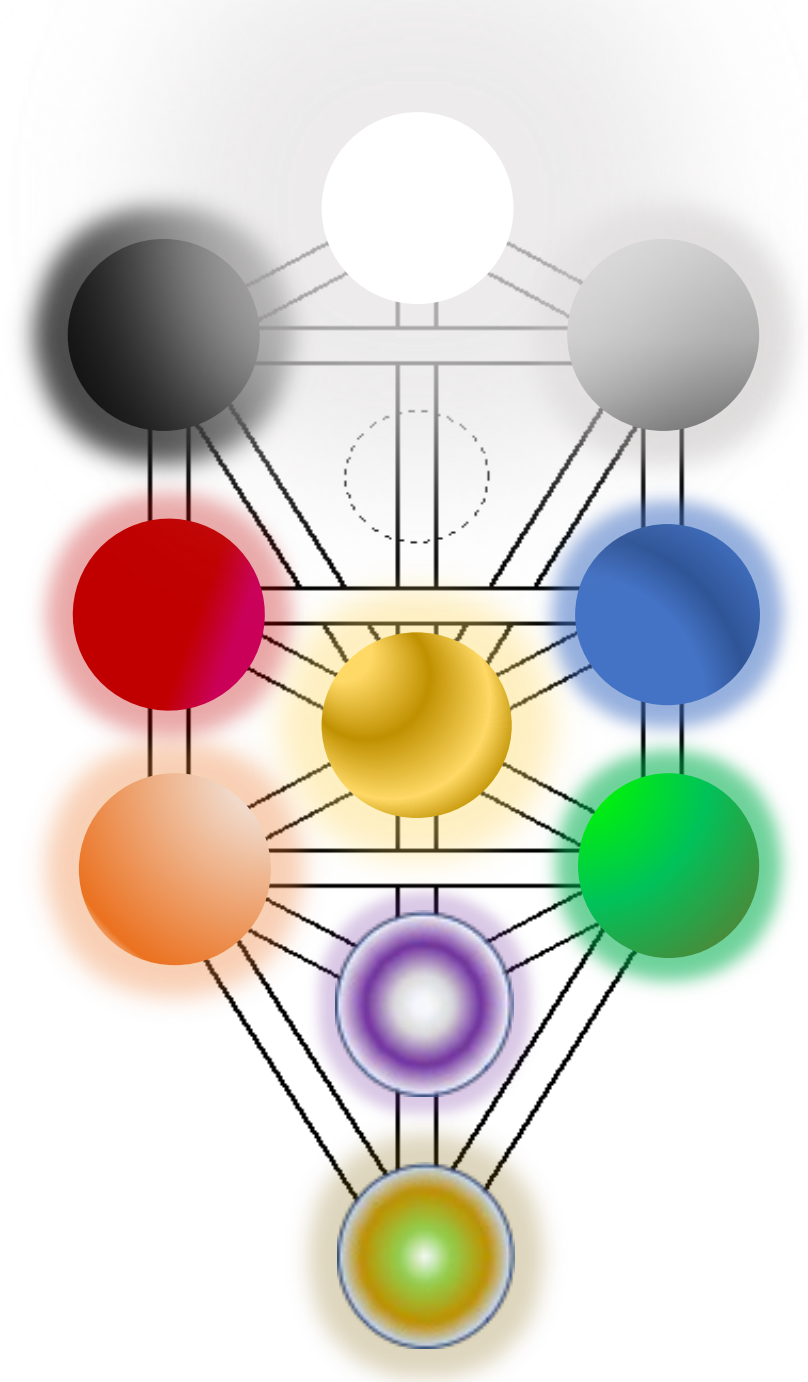


Ioniel

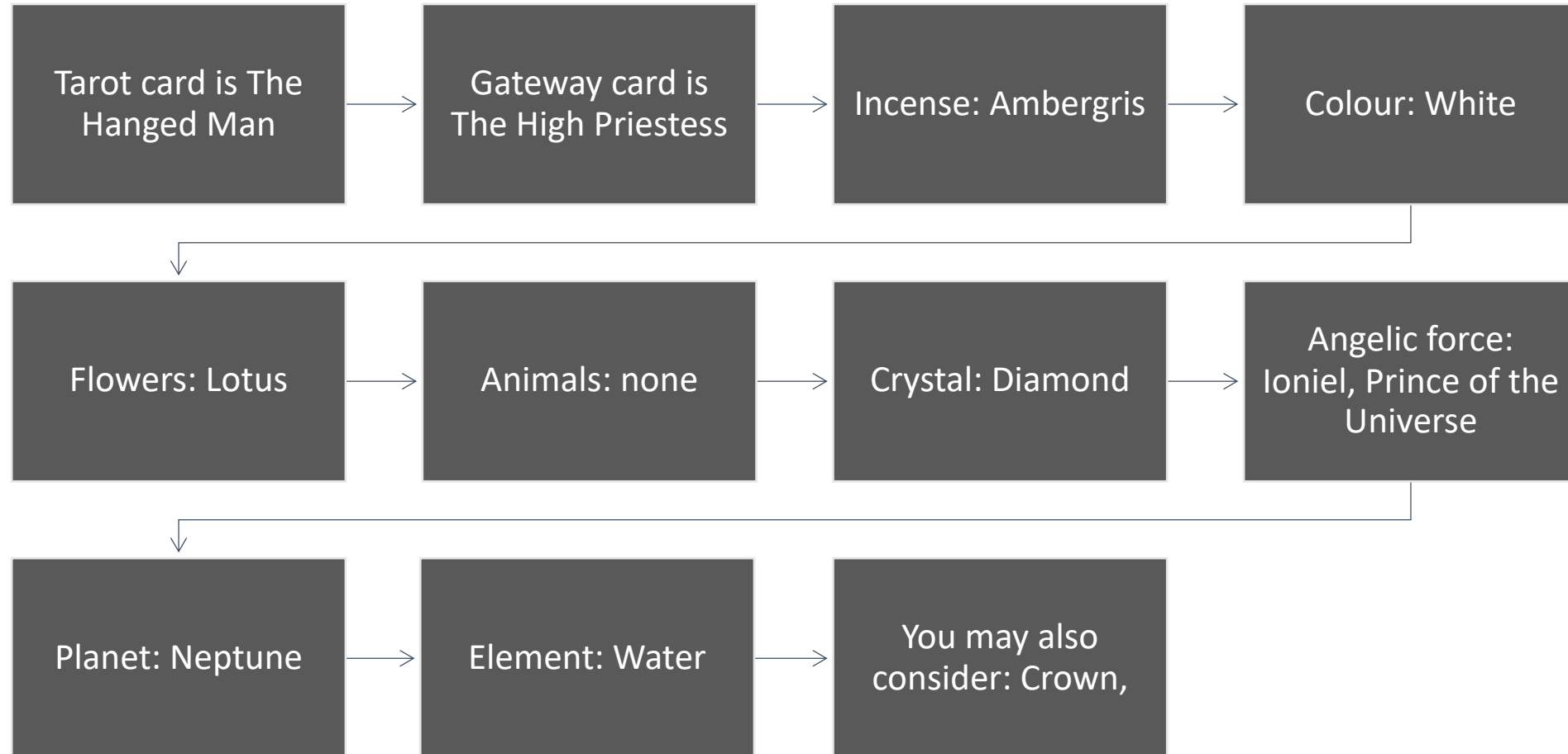
- The traditional Archangel is Metatron, please use him if you feel drawn.
- Ioniel governs your journeys towards new dimensions, new galaxies and new Archangels, as well as some of the other teachers you've met.
- They are beings from other dimensions and all twelve that follow have been introduced in turn by Ioniel, he is your guide and protector as you meet these energies who have stepped forward to help remind your soul of all it has been, the memories from earth as well as other worlds and dimensions you carry within you.
- You have chosen to bring them to this planet for its next evolutionary stage, these energies are here to help.
- As he faces you he is about to start initiating the flow of energy, the grey energy on your left ear, the black to your right. Force and Form.

Meditation

- White is above your head
- *Grey* on the left ear
- *Black* to the right ear
- *Blue* left arm and shoulder
- *Red* right arm and shoulder
- *Gold* your solar plexus
- *Green* your left hip and leg
- *Orange* your right hip and leg
- *Silver/Purple* your pubic bone
- *Earthy colours* your feet



For your altar and room



I Am That I Am

- I have a dream: is it the same as last month, or have you made some changes?
- Astrology: Where is Neptune in your chart, what house, what sign? That information is in your natal chart print out. What does it tell you about your willingness to embrace the divine self, your divine self? What words would you use to describe your responses to your astrology?
- Tarot Cards: what cards came up more than once in your daily reading. The four aces represent this energy, have they been dominant and if so, what suit?
 - The Celtic Cross, or a three-card reading: what information does it have for you?
 - Ioniel: what guidance did he offer you?
 - Other temple images and symbolism: Cards, animals, beings, who you saw and what they had to offer you in the way of information.
 - How has it manifested in your life?
 - Moving forward I commit to: using your newfound information how will you be expressing your 'self' more?



Choose a day and time for your temple

Set up and complete the temple meditation

Consolidate your experiences

Send a copy to me if you want and any questions, happy to help, or share in the group?

Continue to take your daily card

Continue with interwoven light but add those colours to it!

Next Meeting

January 8th 2023 19:00 UK

Now we look at Da'ath

How do you put all the work you've done to good use. What have you really learnt and do you want to walk the paths?

